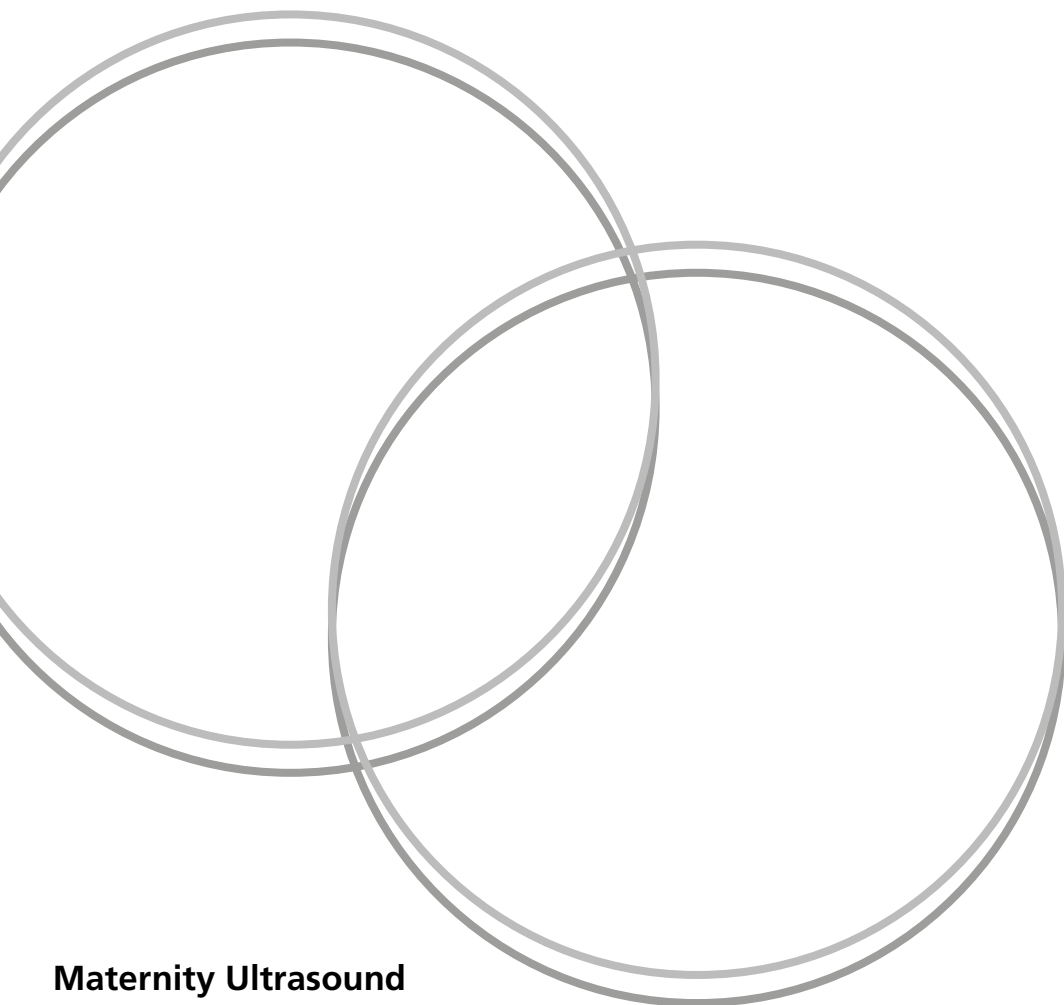


The 18+0 to 20+6 fetal anomaly scan during COVID-19 period

Information for parents



This leaflet is for you to read alongside the green section of the booklet '**Screening tests for you and your baby**' (produced by the National Screening Committee). You should have received this early in your pregnancy. If not, please contact your community midwife.

A mid-pregnancy anomaly scan forms part of the Antenatal Screening Programme that is offered to everyone who is pregnant. It usually takes place between 18 and 20+6 weeks of pregnancy. The purpose of this scan is to look for physical abnormalities that your baby might have developed. The scan can only look for some problems and is not able to pick up every potential issue.

As part of the scan we will also look at the blood flow between you and your baby through the placenta. This can give us information about how well the placenta is working. This part of the scan is called a uterine artery Doppler test.

Sometimes this test may show that you and your baby would benefit from additional scans and monitoring.

Preparation

Please bring your blue maternity notes with you. There is no need for your bladder to be full when you have your scan.

Who can attend

You may bring one person with you to your scan. Children are not permitted. We ask you to wash your hands when you arrive and respect social distancing while queuing and waiting. These measures are in place to keep you and all our patients and staff safe.

For the most up to date information in light of changing guidance during the Covid-19 period, please refer to the Trust website.

Scan pictures

If you are having your scan at the John Radcliffe Hospital you can purchase scan picture tickets at the payment kiosk in the waiting room. Please give the ticket to the Sonographer in exchange for your pictures. The machines take card payment only.

If you are having your scan at the Horton General Hospital please tell the Sonographer if you wish to buy scan pictures.

Sometimes it can be difficult to get a good picture if the baby is lying in certain positions or moving around a lot.

Scanning is a medical procedure, so unfortunately we cannot allow video recording or video calling during your scan.

Sex of the baby

You may be expecting to find out the sex of your baby, but please remember that this is not the purpose of the scan and we do not routinely look for a baby's sex. If you wish to know the sex of your baby, and the Sonographer can see, they will be happy to give you their opinion.

The sonographer's opinion as to the sex of your baby may not always be accurate – sometimes the way the baby is lying can reduce the accuracy of what can be seen during a scan.

It is therefore possible that, when your baby is born, it will be a different sex to that which you were expecting based on the sonographer's opinion.

In light of the known challenges around the accuracy of assessing the sex of a baby during routine antenatal scanning, Oxford University Hospitals NHS Foundation Trust is not liable for any loss incurred as a result of reliance on the sonographer's opinion as to the sex of your baby.

Results

The majority of scans show that the baby is developing as expected and no problems are found. However, if a problem is found or suspected then the Sonographer may refer you to a specialist for a second opinion. This follow-up appointment may not be on the same day – we will let you know when it will be.

If you are overweight, it may be more difficult to get clear images during the scan, which may mean we cannot see your baby very clearly, or that the measurements may not be as accurate.

After your scan

If you need further scans or appointments we will discuss and plan these with you.

We also offer everyone who is pregnant a scan to check their baby's growth at around 36 weeks of pregnancy.

Research

At the John Radcliffe Hospital there is a University of Oxford Research Department (the Oxford Safer Pregnancy Alliance – OSPREA) attached to the Maternity Ultrasound Department. One of the Research Midwives may ask if you would like to take part in one of their studies.

For more details please visit www.osprea.ox.ac.uk

Questions and further information

If you have any questions or concerns, please contact us on the telephone numbers and/or email below.

(We prefer email where possible as phone answering depends on the number of admin staff on duty.)

For further information please visit:

www.ouh.nhs.uk/maternity/resources

Maternity Ultrasound Department

Level 4, Women's Centre

John Radcliffe Hospital

Oxford OX3 9DU

Tel: **01865 221 715**

Email: **maternity.ultrasound@ouh.nhs.uk**

Maternity Ultrasound Department

Antenatal Clinic

Horton Maternity Unit

Banbury OX16 9AL

Tel: **01295 229 464**

For an online copy of the '**Screening Tests for you and your baby**' booklet in English and in 12 other languages please visit:

www.gov.uk/government/publications/screening-tests-for-you-and-your-baby-description-in-brief

Further Information

If you need an interpreter or would like this information leaflet in another format, such as Easy Read, large print, Braille, audio, electronically or another language, please speak to the department where you are being seen. You will find their contact details on your appointment letter.

Author: Specialist Midwife
September 2020
Review: September 2023
Oxford University Hospitals NHS Foundation Trust
www.ouh.nhs.uk/information



Making a difference across our hospitals

charity@ouh.nhs.uk | 01865 743 444 | hospitalcharity.co.uk

OXFORD HOSPITALS CHARITY (REGISTERED CHARITY NUMBER 1175809)

