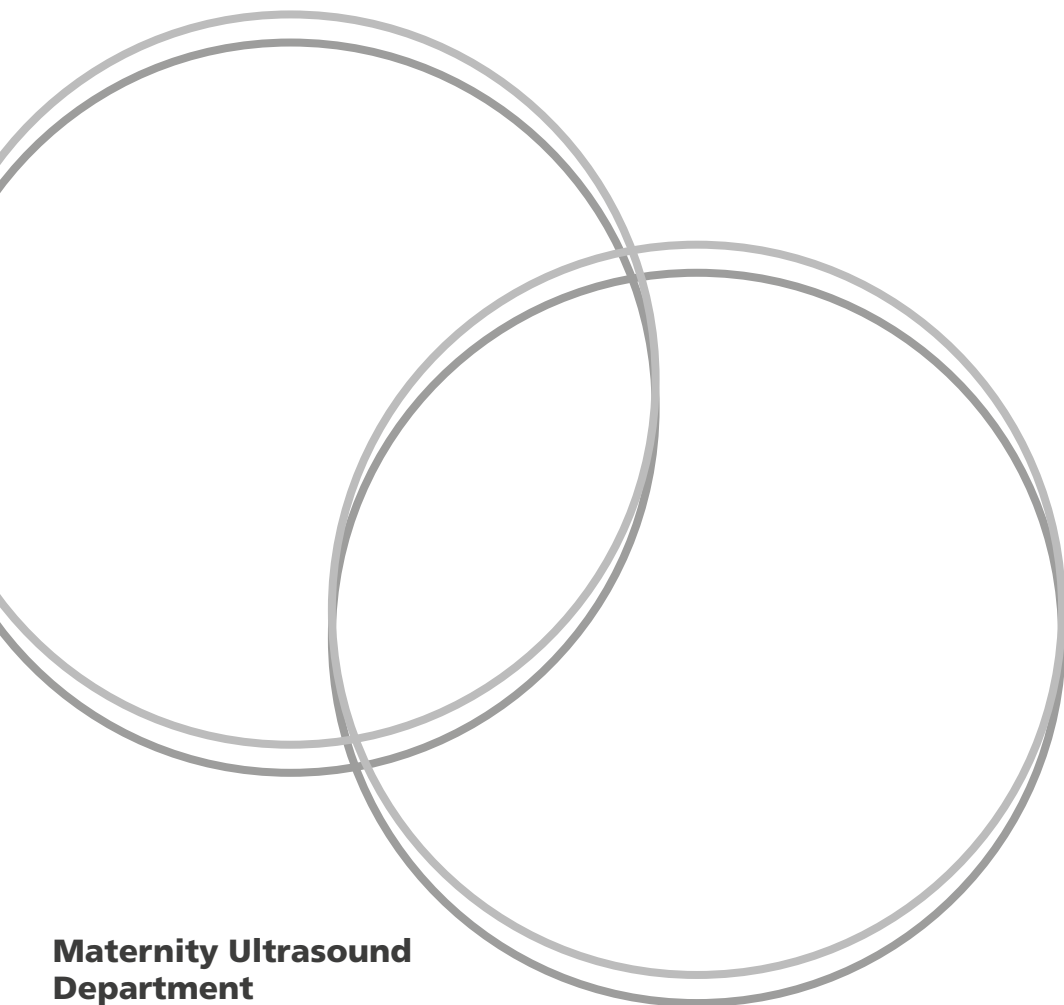


Maternity Growth Scan

Information leaflet



Maternity Ultrasound
Department

Your growth scan

A growth scan is an ultrasound scan to check how well your baby is growing. We offer routine growth scans to everyone who is pregnant at around 36 weeks of pregnancy.

We may offer you additional growth scans if you or your baby need extra monitoring.

What to bring with you

If you have blue maternity notes, please bring them with you to the scan. If you do not have blue maternity notes, you do not need to bring anything.

Who to bring with you

If you have a partner or a support person you are welcome to bring them with you.

Please do not bring children to your appointment, unless you have no alternative. If you have no alternative, we may ask your partner or support person to take them out of the room.

Your ultrasound scan is a medical examination and is important for finding out information about the wellbeing of you and your baby. Your Sonographer needs to concentrate fully to obtain accurate images and measurements and provide the best care.

Visit www.ouh.nhs.uk/maternity for up-to-date information on appointments and scans.

What happens during the scan?

During the scan we will:

- measure your baby's head, waist and thigh bone
- assess the amount of amniotic fluid around your baby
- observe your baby's movements
- record the position of your baby and the placenta
- measure the blood flow in your baby's cord and in some blood vessels in your baby's head.

These measurements will help us assess your baby's wellbeing and growth. It will also allow us to predict an estimated fetal weight (approximately how much your baby weighs) at the time of the scan.

We plot all the measurements on a chart. This enables us to compare your baby's growth to the average growth of babies at the same stage. We can also compare the rate at which your baby is growing using information from your previous scans.

Your Body Mass Index (BMI)

Body Mass Index (BMI) is a measurement used to assess your height to weight ratio. While all ultrasound scans may have a small degree of inaccuracy, if you have a higher BMI the scan measurements may be less accurate.

Scan findings

Most scans will show that a baby is growing and developing as expected.

Sometimes, the growth scan measurements will show that a baby is smaller than expected. This is also known as Small for Gestational Age (SGA). A baby found to be larger than expected is Large for Gestational Age (LGA).

Smaller than expected measurements

If your baby measures much smaller than expected, we will closely monitor you and your baby's wellbeing. We may ask you to see an Obstetrician (hospital doctor), have your baby's heart rate monitored, or have further scans performed.

Very occasionally, it might be necessary for you to give birth to your baby earlier than expected. If this happens, a hospital doctor will discuss a birth plan with you.

Larger than expected measurements

Generally there is no reason to be concerned if your baby is larger than expected.

We will offer you an appointment with a hospital doctor in the Antenatal Clinic to discuss your options and your preferences for the birth.

We may offer testing for gestational diabetes, as this can cause babies to grow larger than expected.

Unexpected blood flow results

If the blood is not flowing as expected through your baby's cord we will refer you for further assessment.

Baby's head not down at 36 weeks

If your baby's head is not down at 36 weeks of pregnancy, we will refer you to the Breech Clinic (Tuesday, JR Delivery Suite).

Scan pictures

Please do not buy a scan picture after 28 weeks of pregnancy.

We are not able to provide you with scan pictures after 28 weeks' gestation, as your baby may have outgrown the picture size.

Further information

If you have any questions or concerns, please speak to your midwife or contact us.

Email: maternity.ultrasound@ouh.nhs.uk

Maternity Ultrasound Department (Oxford)

Level 4, Women's Centre
John Radcliffe Hospital
Oxford OX3 9DU
Tel: 01865 221 715

Maternity Ultrasound Department (Banbury)

Antenatal Clinic
Horton Maternity Unit
Banbury OX16 9AL
Tel: 01295 229 464

Monday to Friday 8.00am to 4.00pm

Further information

If you would like an interpreter, please speak to the department where you are being seen.

Please also tell them if you would like this information in another format, such as:

- Easy Read
- large print
- braille
- audio
- electronic
- another language.

We have tried to make the information in this leaflet meet your needs. If it does not meet your individual needs or situation, please speak to your healthcare team. They are happy to help.

We would like to thank the Oxfordshire Maternity and Neonatal Voices Partnership for their contribution in the development of this leaflet.

Authors: Consultant Obstetrician and Quality Lead

July 2025

Review: July 2028

Oxford University Hospitals NHS Foundation Trust

www.ouh.nhs.uk/information



Making a difference across our hospitals

charity@ouh.nhs.uk | 01865 743 444 | hospitalcharity.co.uk

OXFORD HOSPITALS CHARITY (REGISTERED CHARITY NUMBER 1175809)

