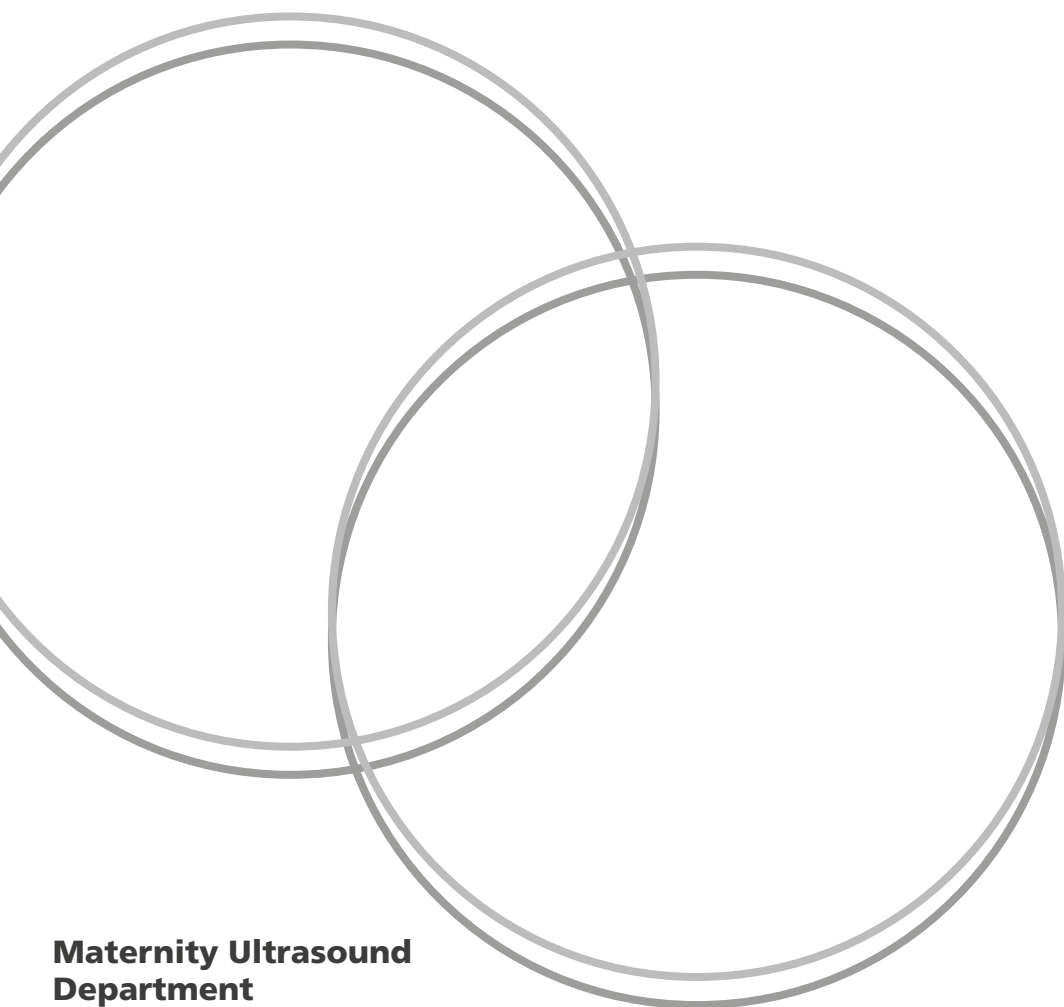


The Mid-pregnancy Anomaly Scan

Information leaflet



Maternity Ultrasound
Department

Please read this leaflet alongside the booklet 'Screening tests for you and your baby' (produced by the National Screening Committee) on your BadgerNotes App – speak to your midwife if you cannot access this.

The Mid-pregnancy Anomaly Scan is part of the Fetal Antenatal Screening Programme offered to anyone who is pregnant, usually between 18 weeks and 20 weeks 6 days of pregnancy. **You do not have to have this scan.**

This ultrasound scan screens for 11 physical conditions that could affect your baby, and checks your baby's growth. It is not possible to detect every physical condition by ultrasound.

For more information visit www.gov.uk and search: **'11 physical conditions 20 week scan'**.

We will also look at the blood flow between you and your baby through the placenta to see how well it is working – this is called a uterine artery doppler test and can tell us if you and your baby would benefit from extra scans and closer monitoring.

Preparation

Wear something comfortable which can move easily, so we can scan the lower part of your abdomen (tummy). Please do not empty your bladder (pass urine) before the scan – a full bladder helps us to get a better view.

Who to bring with you

If you have a partner or a support person you are welcome to bring them with you.

Please do not bring children to your appointment, unless you have **no alternative**. If you have no alternative, we may ask your partner or support person to take them out of the room.

Your ultrasound scan is a medical examination and is important for finding out information about the wellbeing of you and your baby. Your Sonographer needs to concentrate fully to obtain accurate images and measurements and provide the best care.

Visit www.ouh.nhs.uk/maternity for up-to-date information on appointments and scans.

Scan pictures

Pictures from the scan cost **£5 each**. Please pay by card only at the payment kiosk in the waiting room **before** your scan appointment and give your receipt to the Sonographer before they begin the scan.

The quality of the image depends on the baby's position, and other factors not within our control.

Your baby's sex

We do not routinely look for a baby's sex, but if you wish to know, and the Sonographer can see, they will be happy to give you their opinion.

The Sonographer's opinion may not be accurate – it depends on how the baby is lying and other factors not within our control. When your baby is born, it may be a **different sex** to what you were expecting, based on the Sonographer's opinion.

Oxford University Hospitals (OUH) NHS Foundation Trust is not responsible for any loss incurred as a result of relying on our Sonographer's opinion, due to the difficulty of accurately determining a baby's sex during antenatal screening.

Results

Most anomaly scans show that the baby is developing as expected.

If something unexpected is found (or suspected) during the scan, the Sonographer may refer you to a Fetal Medicine doctor for a second opinion.

This follow-up appointment may not be on the same day, but the Fetal Medicine Unit will contact you within **3 working days**.

After your scan

If you require further scans or appointments we will discuss and plan these with you.

We will also offer you a scan to check your baby's growth at around 36 weeks of pregnancy.

Research

The Oxford Safer Pregnancy Alliance (OSPREA), part of the University of Oxford Research Department, works with the John Radcliffe Hospital Maternity Ultrasound Department.

While you are waiting a Research Midwife may ask you if you would like to take part in one of their research studies.

For more details please visit: www.osprea.ox.ac.uk

You do not have to take part if you do not want to.

Questions or concerns

If you have any questions or concerns, please speak to your midwife or contact us.

Email: maternity.ultrasound@ouh.nhs.uk

Maternity Ultrasound Department (Oxford)

Level 4, Women's Centre

John Radcliffe Hospital,

Oxford, OX3 9DU

Telephone: 01865 221 715

Maternity Ultrasound Department (Banbury)

Antenatal Clinic

Horton Maternity Unit,

Banbury, OX16 9AL

Telephone: 01295 229 464

Monday to Friday 8.00am to 4.00pm

Further information

If you would like an interpreter, please speak to the department where you are being seen.

Please also tell them if you would like this information in another format, such as:

- Easy Read
- large print
- braille
- audio
- electronic
- another language.

We have tried to make the information in this leaflet meet your needs. If it does not meet your individual needs or situation, please speak to your healthcare team. They are happy to help.

We would like to thank the Oxfordshire Maternity and Neonatal Voices Partnership for their contribution in the development of this leaflet.

Author: Ultrasound Specialist Midwife

September 2024

Review: September 2027

Oxford University Hospitals NHS Foundation Trust

www.ouh.nhs.uk/information



Making a difference across our hospitals

charity@ouh.nhs.uk | 01865 743 444 | hospitalcharity.co.uk

OXFORD HOSPITALS CHARITY (REGISTERED CHARITY NUMBER 1175809)

