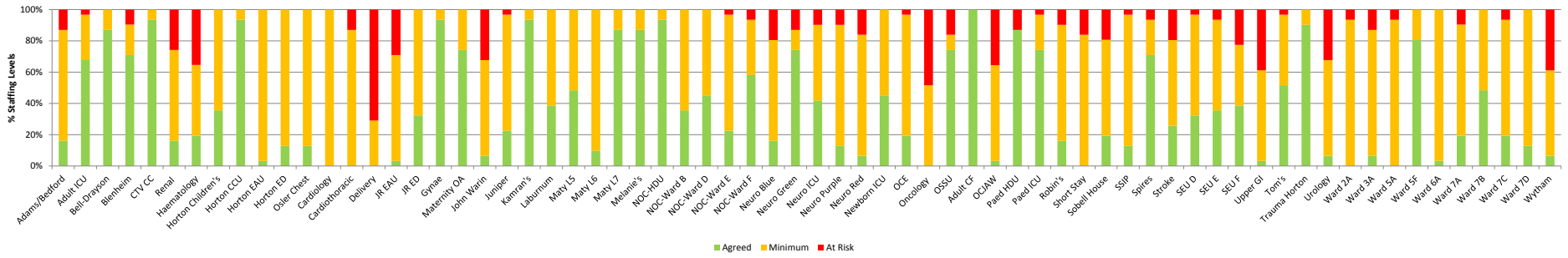


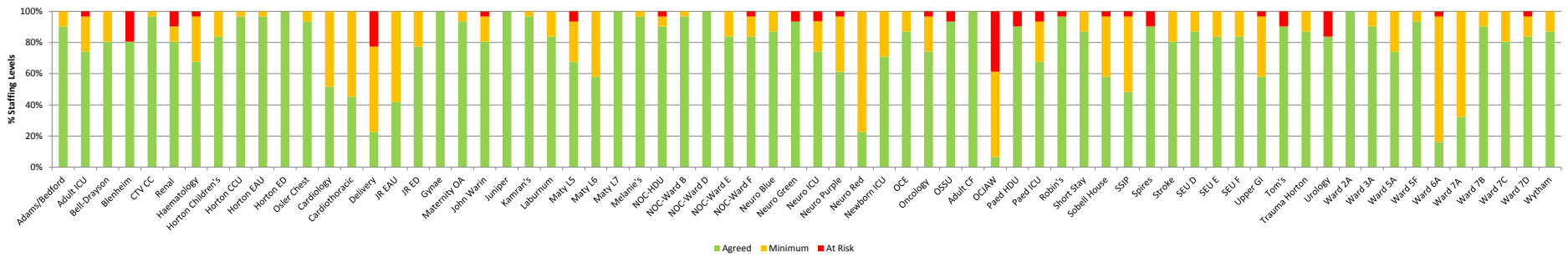
Registered Nurses Average Fill = 93.47

Unregistered Nurses Average Fill = 86.31

Safe Staffing Trust wide Inpatient wards
Day shifts - March 2017



Safe Staffing Trust wide Inpatient wards
Night shifts - March 2017



Staffing Levels for each Ward showing % of total hours that were filled by Bank and Agency Staff in March 2017

