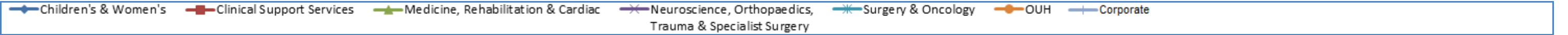
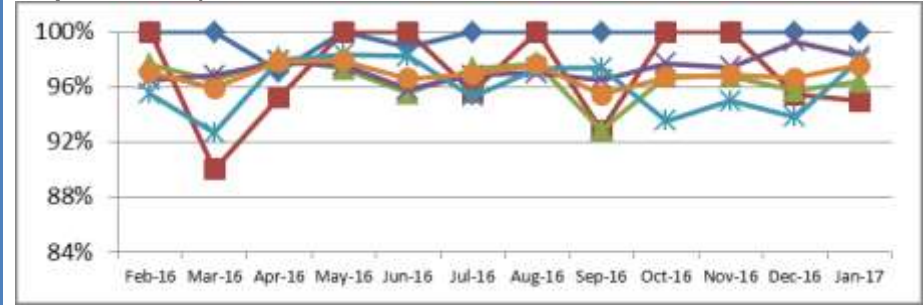


Appendix 1

Board Quality Report Dashboard

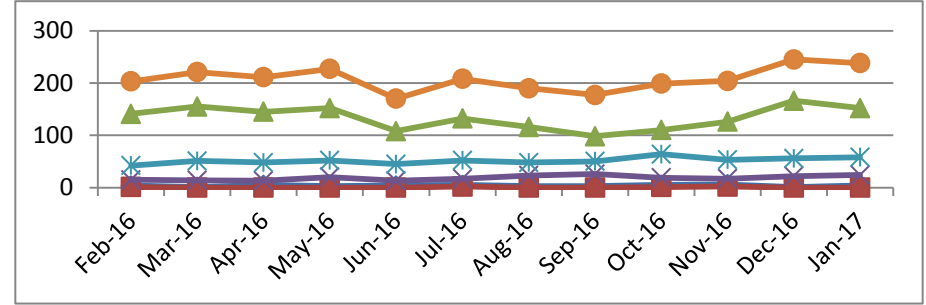


PS01 - Safety Thermometer (% patients receiving care free of any newly acquired harm)



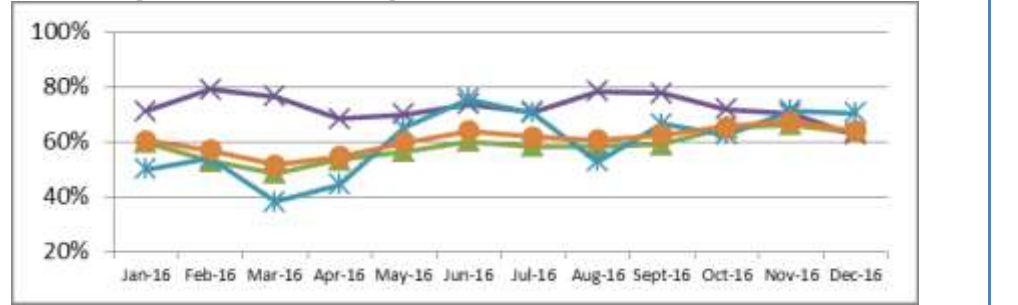
Division	Feb-16	Mar-16	Apr-16	May-16	Jun-16	Jul-16	Aug-16	Sep-16	Oct-16	Nov-16	Dec-16	Jan-17	Trend to date
Children's & Women's	100.00%	100.00%	97.10%	100.00%	100.00%	98.90%	100.00%	100.00%	100.00%	100.00%	100.00%	100.00%	
Clinical Support Services	100.00%	90.00%	95.24%	100.00%	100.00%	95.65%	100.00%	92.86%	100.00%	95.45%	95.00%		
Medicine, Rehabilitation & Cardiac	97.61%	96.57%	98.07%	97.32%	95.50%	97.37%	97.70%	92.84%	96.77%	96.73%	95.71%	96.39%	
Neuroscience, Orthopaedics, Trauma & Specialist Surgery	95.52%	96.85%	97.80%	97.58%	95.79%	96.82%	97.03%	96.49%	97.72%	97.42%	99.31%	98.33%	
Surgery & Oncology	95.47%	92.64%	97.93%	98.37%	98.24%	95.30%	97.36%	97.38%	93.56%	94.96%	93.81%	97.93%	
OUH	97.08%	95.92%	97.84%	97.91%	96.60%	96.94%	97.60%	95.45%	96.70%	96.86%	96.64%	97.57%	

CE02 - Crude Mortality



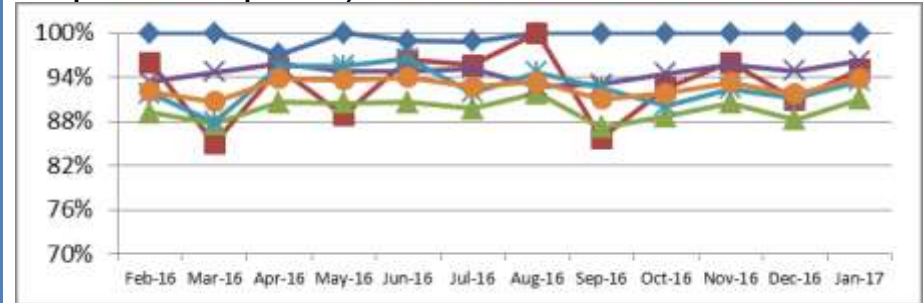
Row Labels	Feb-16	Mar-16	Apr-16	May-16	Jun-16	Jul-16	Aug-16	Sep-16	Oct-16	Nov-16	Dec-16	Jan-17	Trend to date
Division of Children's & Women's	4	1	5	3	4	5	3	3	5	6	3	4	
Division of Clinical Support Services	1	0	0	0	0	2	0	0	1	2	0		
Division of Medicine, Rehabilitation & Cardiac	141	155	145	152	108	132	116	98	110	126	166	152	
Division of Neuroscience, Orthopaedics, Trauma & Specialist Surgery	15	14	13	20	13	17	23	26	19	17	22	24	
Division of Surgery & Oncology	47	51	48	52	45	52	48	58	64	53	58	58	
Grand Total	203	221	211	227	170	208	190	177	199	304	245	238	

CE03 - Dementia - % patients aged > 75 admitted as an emergency who are screened [one month in arrears]



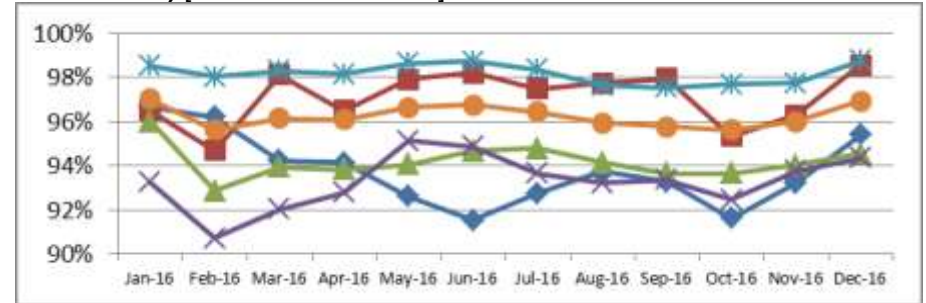
Division	Jan-16	Feb-16	Mar-16	Apr-16	May-16	Jun-16	Jul-16	Aug-16	Sep-16	Oct-16	Nov-16	Dec-16	Trend to date
Division of Medicine, Rehabilitation & Cardiac	59.89%	53.01%	48.71%	53.60%	56.66%	60.18%	58.43%	58.21%	59.17%	65.18%	66.43%	63.50%	
Division of Neuroscience, Orthopaedics, Trauma & Specialist Surgery	71.30%	79.17%	76.42%	68.47%	70.00%	73.79%	70.94%	78.33%	77.67%	71.96%	70.19%	62.63%	
Division of Surgery & Oncology	50.00%	53.93%	38.28%	44.57%	65.26%	75.50%	70.31%	52.81%	66.67%	62.50%	71.43%	70.53%	
Grand Total	60.44%	56.93%	51.82%	54.77%	59.82%	64.01%	61.80%	60.73%	62.54%	65.71%	67.53%	64.10%	

PS02 - Safety Thermometer (% patients receiving care free of any harm - irrespective of acquisition)



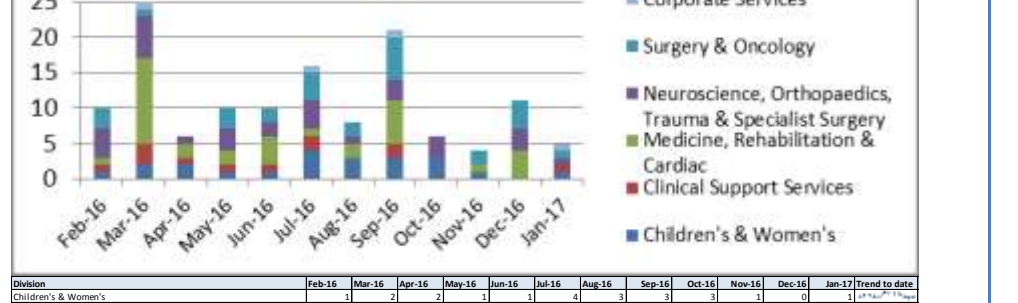
Division	Feb-16	Mar-16	Apr-16	May-16	Jun-16	Jul-16	Aug-16	Sep-16	Oct-16	Nov-16	Dec-16	Jan-17	Trend to date
Children's & Women's	100.00%	100.00%	97.10%	100.00%	100.00%	98.90%	100.00%	100.00%	100.00%	100.00%	100.00%	100.00%	
Clinical Support Services	96.00%	85.00%	95.24%	88.89%	96.30%	95.65%	100.00%	85.71%	92.59%	96.00%	90.91%	95.00%	
Medicine, Rehabilitation & Cardiac	89.23%	87.59%	90.58%	90.49%	90.62%	89.71%	91.82%	87.21%	88.68%	90.46%	88.20%	90.98%	
Neuroscience, Orthopaedics, Trauma & Specialist Surgery	93.35%	94.64%	95.91%	94.81%	94.82%	95.22%	92.74%	92.98%	94.66%	95.71%	94.83%	96.11%	
Surgery & Oncology	91.77%	87.88%	95.44%	95.53%	96.48%	91.88%	94.71%	92.58%	90.13%	92.44%	91.15%	93.44%	
OUH	92.05%	90.70%	93.79%	93.64%	93.96%	92.68%	93.41%	91.01%	91.84%	93.31%	91.76%	93.87%	

PS03 - VTE Risk Assessment (% admitted patients receiving risk assessment) [one month in arrears]



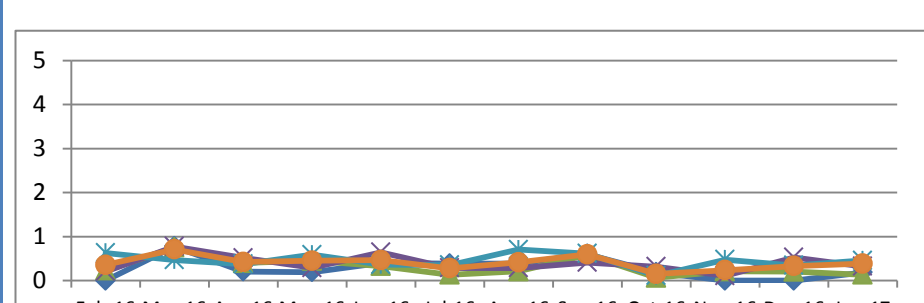
Row Labels	Jan-16	Feb-16	Mar-16	Apr-16	May-16	Jun-16	Jul-16	Aug-16	Sep-16	Oct-16	Nov-16	Dec-16	Trend to date
Division of Children's & Women's	96.65%	96.21%	94.22%	94.13%	92.60%	91.53%	92.76%	93.74%	93.26%	91.60%	93.21%	95.40%	
Division of Clinical Support Services	95.49%	94.67%	98.11%	96.48%	97.89%	98.18%	97.48%	97.74%	97.94%	95.34%	96.30%	98.53%	
Division of Medicine, Rehabilitation & Cardiac	95.98%	92.86%	93.95%	93.83%	94.05%	94.67%	94.78%	94.15%	93.65%	93.65%	94.04%	94.53%	
Division of Neuroscience, Orthopaedics, Trauma & Specialist Surgery	93.23%	90.71%	92.01%	92.76%	95.12%	94.88%	93.64%	93.21%	93.35%	92.41%	93.77%	94.35%	
Division of Surgery & Oncology	98.52%	98.02%	98.14%	98.64%	98.72%	98.35%	97.60%	97.53%	97.68%	97.73%	98.76%		
Grand Total	97.02%	95.82%	96.13%	96.09%	96.63%	96.73%	96.43%	95.92%	95.76%	95.60%	95.88%	96.92%	

PS04 - Serious Incidents Requiring Investigation (SIRI) reported via STEIS



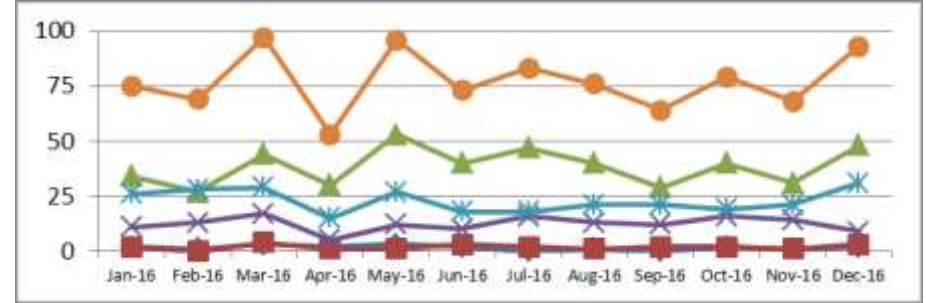
Division	Feb-16	Mar-16	Apr-16	May-16	Jun-16	Jul-16	Aug-16	Sep-16	Oct-16	Nov-16	Dec-16	Jan-17	Trend to date
Children's & Women's	1	2	2	1	1	4	3	3	3	1	0	1	
Clinical Support Services	1	3	1	1	1	2	0	2	0	0	0	1	
Medicine, Rehabilitation & Cardiac	1	12	2	2	4	1	2	6	0	1	4	0	
Neuroscience, Orthopaedics, Trauma & Specialist Surgery	4	6	1	3	2	4	1	3	3	0	3	3	
Surgery & Oncology	3	1	0	3	2	4	2	6	0	2	4	1	
Corporate Services	0	1	0	0	0	1	0	1	0	0	0	1	
OUH	10	25	6	10	10	16	8	21	6	4	11	5	

PS10 - Rate of incidents associated with moderate harm or greater by 1000 bed days.



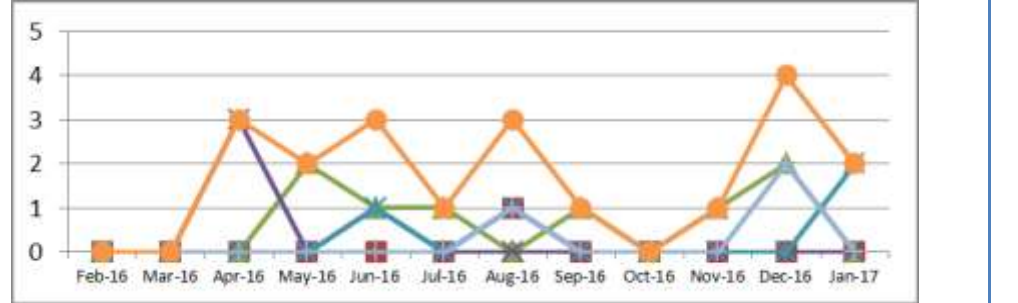
Division	Feb-16	Mar-16	Apr-16	May-16	Jun-16	Jul-16	Aug-16	Sep-16	Oct-16	Nov-16	Dec-16	Jan-17	Trend to date
Children's & Women's	0.00	0.78	0.21	0.18	0.42	0.39	0.39	0.60	0.14	0.00	0.00	0.15	
Clinical Support Services	0.23	0.76	0.40	0.40	0.33	0.12	0.21	0.54	0.07	0.11	0.20	0.14	
Medicine, Rehabilitation & Cardiac	0.21	0.78	0.53	0.28	0.64	0.28	0.28	0.41	0.32	0.11	0.53	0.33	
Neuroscience, Orthopaedics, Trauma & Specialist Surgery	0.63	0.47	0.26	0.59	0.26	0.26	0.71	0.63	0.11	0.48	0.26	0.46	
Surgery & Oncology	0.63	0.47	0.26	0.59	0.26	0.26	0.71	0.63	0.11	0.48	0.26	0.46	
OUH	0.36	0.71	0.42	0.42	0.47	0.38	0.41	0.60	0.15	0.14	0.33	0.38	

PS11 - Total number of newly acquired pressure ulcers (category 2,3 and 4) reported via Datix [one month in arrears]



Division	Jan-16	Feb-16	Mar-16	Apr-16	May-16	Jun-16	Jul-16	Aug-16	Sep-16	Oct-16	Nov-16	Dec-16	Trend to date
Children's & Women's	2	1	3	2	3	2	0	1	0	2	1	2	
Clinical Support Services	2	0	4	1	1	3	2	1	2	2	1	2	
Medicine, Rehabilitation & Cardiac	34	27	44	30	53	40	47	40	29	40	31	48	
Neuroscience, Orthopaedics, Trauma & Specialist Surgery	11	13	17	5	12	10	16	13	12	16	14	9	
Surgery & Oncology	30	28	29	15	27	18	18	18	21	21	19	21	
OUH	75	69	97	53	96	73	83	76	64	79	68	93	

PS12 - Falls leading to moderate harm or greater



Division	Feb-16	Mar-16	Apr-16	May-16	Jun-16	Jul-16	Aug-16	Sep-16	Oct-16	Nov-16	Dec-16	Jan-17	Trend to date
Children's & Women's	0	0	0	0	0	0	0	0	0	0	0	0	
Clinical Support Services	0	0	0	0	0	0	0	1	0	0	0	0	
Medicine, Rehabilitation & Cardiac	0	0	0	2	1	1	0	1	0	1	2	0	
Neuroscience, Orthopaedics, Trauma & Specialist Surgery	0	0	3	0	1	0	0	0	0	0	0	0	
Surgery & Oncology	0	0	0	0	1	0	1	0	0	0	0	2	
Corporate Services	0	0	0	0	0	0	1	0	0	0	0	3	
OUH	0	0	3	2	3	1	3	1	0	1	4	3	

