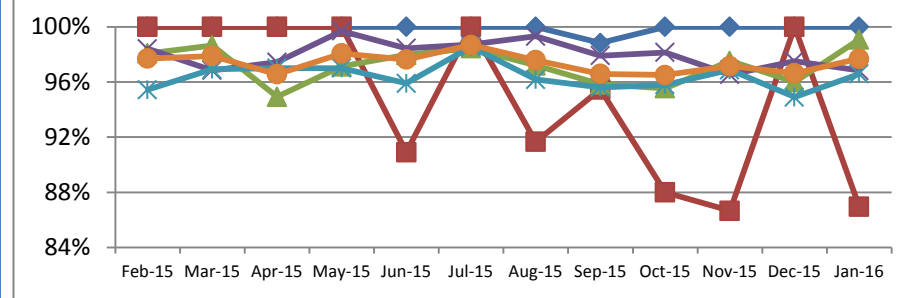


Board Quality Report Dashboard

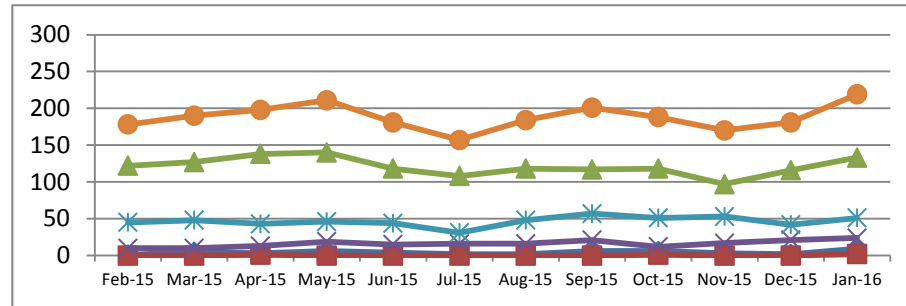
◆ Children's & Women's
 ■ Clinical Support Services
 ▲ Medicine, Rehabilitation & Cardiac
 ✕ Neuroscience, Orthopaedics, Trauma & Specialist Surgery
 ✱ Surgery & Oncology
 ● OUH
 — Corporate

PS01 - Safety Thermometer (% patients receiving care free of any newly acquired harm)



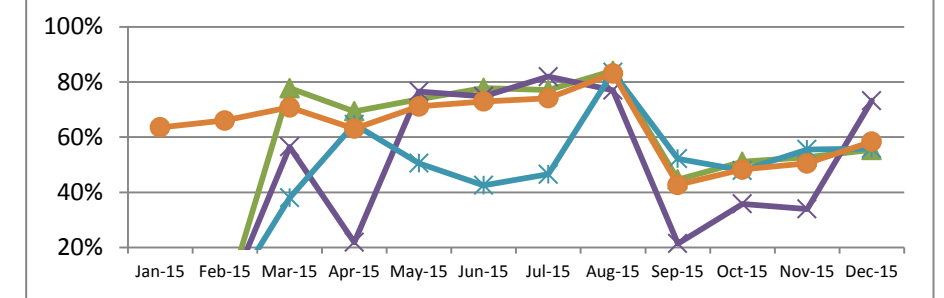
Division	Feb-15	Mar-15	Apr-15	May-15	Jun-15	Jul-15	Aug-15	Sep-15	Oct-15	Nov-15	Dec-15	Jan-16	Trend to date
Children's & Women's	100.00%	100.00%	100.00%	100.00%	100.00%	100.00%	100.00%	98.82%	100.00%	100.00%	100.00%	100.00%	↔
Clinical Support Services	100.00%	100.00%	100.00%	100.00%	90.91%	100.00%	91.67%	95.45%	88.00%	86.67%	100.00%	86.96%	↔
Medicine, Rehabilitation & Cardiac	98.07%	98.65%	94.92%	97.12%	97.97%	98.44%	97.20%	95.83%	95.54%	97.52%	95.99%	99.08%	↔
Neuroscience, Orthopaedics, Trauma & Specialist Surgery	98.40%	96.84%	97.43%	99.69%	98.44%	98.72%	99.31%	97.90%	98.14%	96.54%	97.51%	96.83%	↔
Surgery & Oncology	95.44%	96.92%	97.00%	97.00%	95.90%	98.55%	96.18%	95.60%	95.80%	96.88%	94.90%	96.58%	↔
OUH	97.69%	97.89%	96.56%	98.07%	97.63%	98.68%	97.58%	96.58%	96.51%	97.15%	96.63%	97.69%	↔

CE02 - Crude Mortality



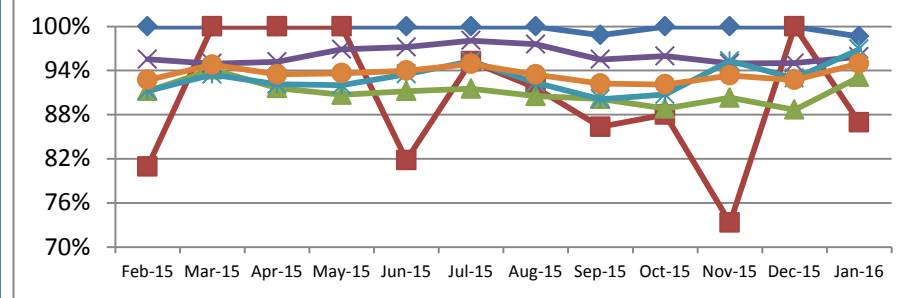
Division	Feb-15	Mar-15	Apr-15	May-15	Jun-15	Jul-15	Aug-15	Sep-15	Oct-15	Nov-15	Dec-15	Jan-16	Trend to date
Children's & Women's	1	5	3	6	4	2	2	6	6	3	2	9	↔
Clinical Support Services	0	0	1	0	0	0	0	0	1	0	0	2	↔
Medicine, Rehabilitation & Cardiac	122	127	138	140	118	108	118	117	118	97	116	133	↔
Neuroscience, Orthopaedics, Trauma & Specialist Surgery	10	10	13	19	15	16	21	12	17	21	24	24	↔
Surgery & Oncology	45	48	43	46	44	31	48	57	51	53	42	51	↔
OUH	178	190	198	211	181	157	184	201	188	170	181	219	↔

CE03 - Dementia - % patients aged > 75 admitted as an emergency who are screened



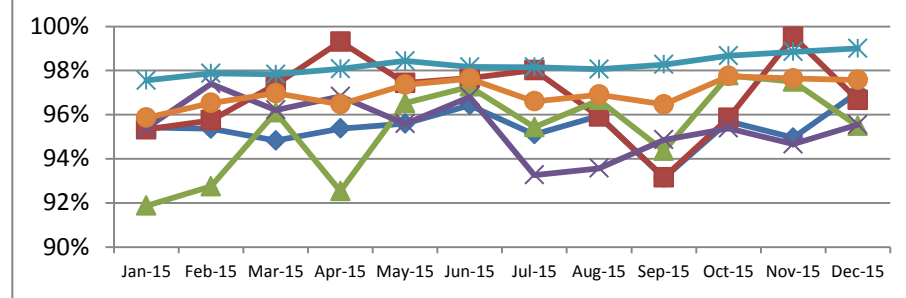
Division	Jan-15	Feb-15	Mar-15	Apr-15	May-15	Jun-15	Jul-15	Aug-15	Sep-15	Oct-15	Nov-15	Dec-15	Trend to date
Medicine, Rehabilitation & Cardiac	n/a	n/a	77.76%	69.35%	73.77%	77.84%	77.08%	84.03%	44.67%	51.05%	52.75%	55.40%	↔
Neuroscience, Orthopaedics, Trauma & Specialist Surgery	n/a	n/a	56.47%	21.92%	76.53%	74.78%	81.93%	77.01%	21.43%	35.82%	33.98%	73.23%	↔
Surgery & Oncology	n/a	n/a	38.04%	64.63%	50.57%	42.55%	46.58%	83.54%	52.17%	47.96%	55.56%	55.91%	↔
OUH	63.56%	66.02%	70.79%	63.09%	71.17%	72.92%	74.08%	83.09%	42.74%	48.32%	50.49%	58.40%	↔

PS02 - Safety Thermometer (% patients receiving care free of any harm - irrespective of acquisition)



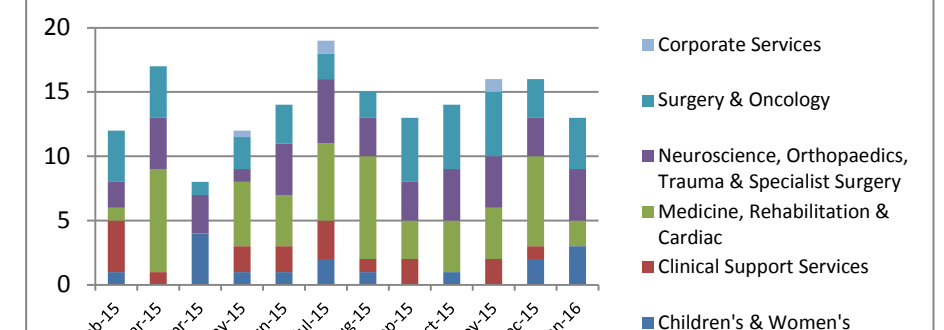
Division	Feb-15	Mar-15	Apr-15	May-15	Jun-15	Jul-15	Aug-15	Sep-15	Oct-15	Nov-15	Dec-15	Jan-16	Trend to date
Children's & Women's	100.00%	100.00%	100.00%	100.00%	100.00%	100.00%	100.00%	98.82%	100.00%	100.00%	100.00%	100.00%	↔
Clinical Support Services	80.95%	100.00%	100.00%	100.00%	91.82%	95.24%	91.67%	86.36%	88.00%	73.33%	100.00%	86.96%	↔
Medicine, Rehabilitation & Cardiac	91.20%	94.13%	91.61%	90.71%	91.20%	91.54%	90.54%	90.13%	88.84%	90.32%	88.68%	93.12%	↔
Neuroscience, Orthopaedics, Trauma & Specialist Surgery	95.53%	94.94%	95.18%	96.88%	97.19%	98.08%	97.59%	95.51%	95.96%	94.97%	95.02%	95.87%	↔
Surgery & Oncology	91.25%	93.46%	92.13%	92.00%	93.52%	95.27%	92.37%	90.11%	90.76%	95.31%	92.94%	96.90%	↔
OUH	92.72%	94.80%	93.48%	93.63%	93.99%	94.90%	93.46%	92.22%	92.12%	93.33%	92.72%	94.97%	↔

PS03 - VTE Risk Assessment (% admitted patients receiving risk assessment)



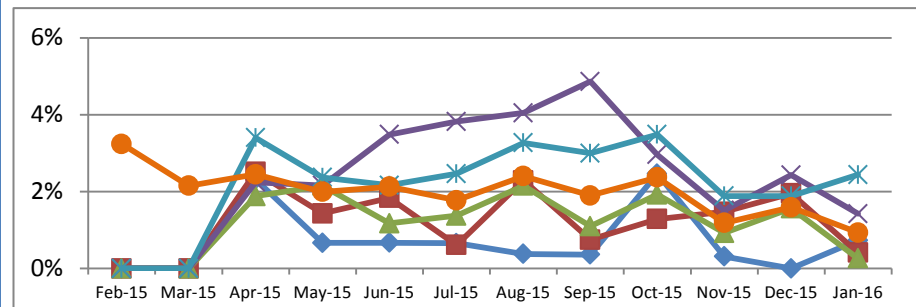
Division	Jan-15	Feb-15	Mar-15	Apr-15	May-15	Jun-15	Jul-15	Aug-15	Sep-15	Oct-15	Nov-15	Dec-15	Trend to date
Children's & Women's	95.42%	95.36%	94.83%	95.37%	95.60%	96.43%	95.11%	95.95%	93.14%	95.89%	94.96%	97.02%	↔
Clinical Support Services	95.33%	95.74%	97.37%	99.31%	97.44%	97.66%	98.02%	95.92%	93.16%	95.86%	99.53%	96.67%	↔
Medicine, Rehabilitation & Cardiac	91.88%	92.76%	96.11%	92.54%	96.52%	97.27%	95.44%	96.67%	94.36%	97.78%	97.50%	95.49%	↔
Neuroscience, Orthopaedics, Trauma & Specialist Surgery	95.39%	97.40%	96.21%	96.83%	95.59%	96.80%	93.27%	93.58%	94.86%	95.38%	94.66%	95.55%	↔
Surgery & Oncology	97.56%	97.87%	97.83%	98.08%	98.44%	98.17%	98.15%	98.06%	98.27%	98.67%	98.85%	99.01%	↔
OUH	95.86%	96.53%	96.97%	96.47%	97.36%	97.63%	96.60%	96.91%	96.47%	97.75%	97.64%	97.57%	↔

PS04 - Serious Incidents Requiring Investigation (SIRI) reported via STEIS



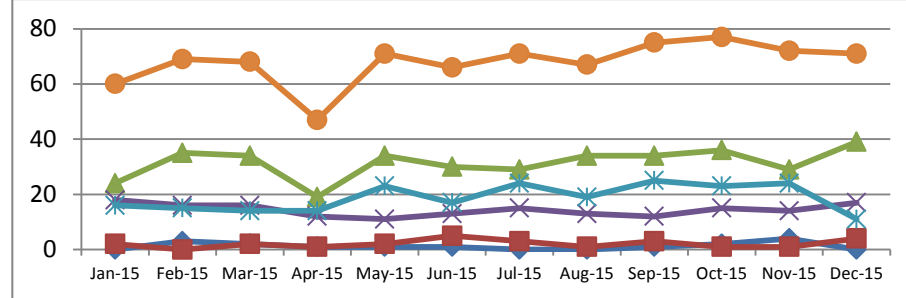
Division	Feb-15	Mar-15	Apr-15	May-15	Jun-15	Jul-15	Aug-15	Sep-15	Oct-15	Nov-15	Dec-15	Jan-16	Trend to date
Children's & Women's	1	0	4	1	1	2	1	0	1	0	2	3	↔
Clinical Support Services	4	1	0	2	2	3	1	2	0	2	1	0	↔
Medicine, Rehabilitation & Cardiac	1	8	0	5	4	6	8	3	4	4	7	2	↔
Neuroscience, Orthopaedics, Trauma & Specialist Surgery	2	4	3	1	4	5	3	3	4	4	3	4	↔
Surgery & Oncology	4	4	4	2	3	2	2	5	5	5	3	4	↔
Corporate Services	0	0	0	0.5	0	1	0	0	0	1	0	0	↔
OUH	12	17	8	12	14	19	15	13	14	16	16	13	↔

PS10 - % of incidents associated with moderate harm or greater



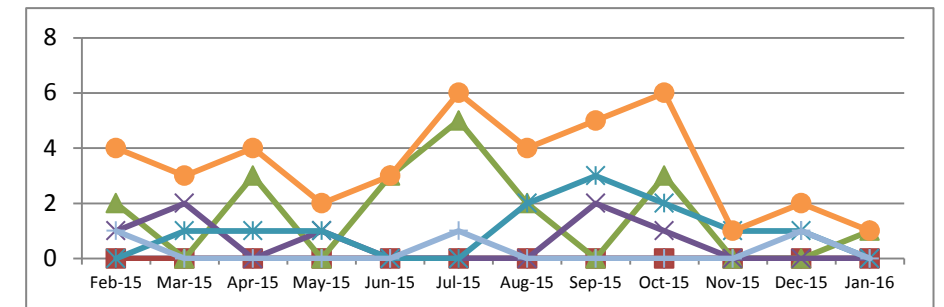
Division	Feb-15	Mar-15	Apr-15	May-15	Jun-15	Jul-15	Aug-15	Sep-15	Oct-15	Nov-15	Dec-15	Jan-16	Trend to date
Children's & Women's	n/a	n/a	2.32%	0.67%	0.67%	0.66%	0.38%	0.36%	2.46%	0.31%	0.00%	0.73%	↔
Clinical Support Services	n/a	n/a	2.51%	1.43%	1.84%	0.61%	2.29%	0.75%	1.29%	1.48%	1.95%	0.41%	↔
Medicine, Rehabilitation & Cardiac	n/a	n/a	1.88%	2.15%	1.17%	1.38%	2.15%	1.10%	1.93%	0.92%	1.57%	0.26%	↔
Neuroscience, Orthopaedics, Trauma & Specialist Surgery	n/a	n/a	2.24%	2.16%	3.49%	3.82%	4.05%	4.86%	2.96%	1.51%	2.43%	1.42%	↔
Surgery & Oncology	n/a	n/a	3.40%	2.37%	2.16%	2.46%	3.27%	3.00%	3.49%	1.89%	1.89%	2.84%	↔
OUH	3.24%	2.15%	2.45%	1.99%	2.13%	1.77%	2.40%	1.90%	2.37%	1.19%	1.59%	0.93%	↔

PS11 - Total number of newly acquired pressure ulcers (category 2,3 and 4) reported via Datix



Division	Jan-15	Feb-15	Mar-15	Apr-15	May-15	Jun-15	Jul-15	Aug-15	Sep-15	Oct-15	Nov-15	Dec-15	Trend to date
Children's & Women's	0	3	2	1	1	1	1	0	0	1	2	4	↔
Clinical Support Services	2	0	2	1	2	1	3	1	3	1	1	1	↔
Medicine, Rehabilitation & Cardiac	24	35	34	19	34	30	29	34	34	36	29	30	↔
Neuroscience, Orthopaedics, Trauma & Specialist Surgery	18	16	16	12	11	13	15	13	12	15	14	17	↔
Surgery & Oncology	16	15	14	14	23	17	24	19	25	23	24	11	↔
OUH	60	69	68	47	71	66	71	67	75	77	72	71	↔

PS12 - Falls leading to moderate harm or greater



Division	Feb-15	Mar-15	Apr-15	May-15	Jun-15	Jul-15	Aug-15	Sep-15	Oct-15	Nov-15	Dec-15	Jan-16	Trend to date
Children's & Women's	0	0	0	0	0	0	0	0	0	0	0	0	↔
Clinical Support Services	0	0	0	0	0	0	0	0	0	0	0	0	↔
Medicine, Rehabilitation & Cardiac	2	0	3	0	3	5	2	0	3	0	0	1	↔
Neuroscience, Orthopaedics, Trauma & Specialist Surgery	1	2	0	1	0	0	0	0	2	1	0	0	↔
Surgery & Oncology	0	1	1	1	0	0	2	3	2	1	1	1	↔
Corporate Services	1	0	0	0	0	1	0	0	0	0	1	0	↔
OUH	4	3	4	2	3	6	4	5	6	1	2	1	↔