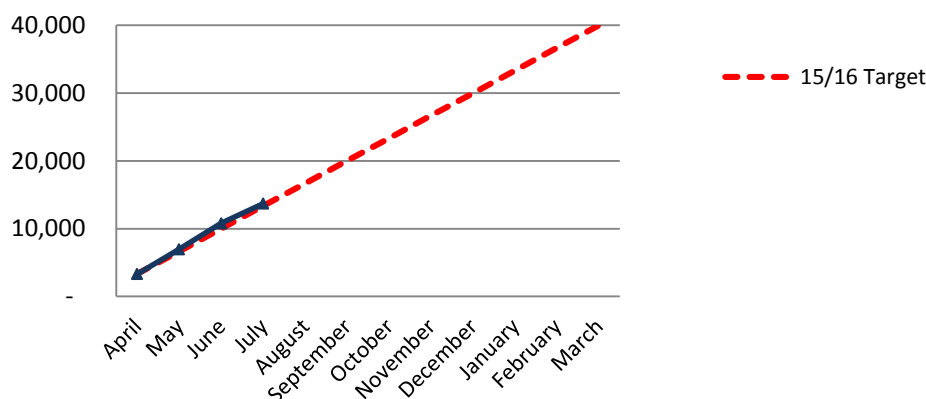


Appendix 2

NIHR CRN: Thames Valley and South Midlands

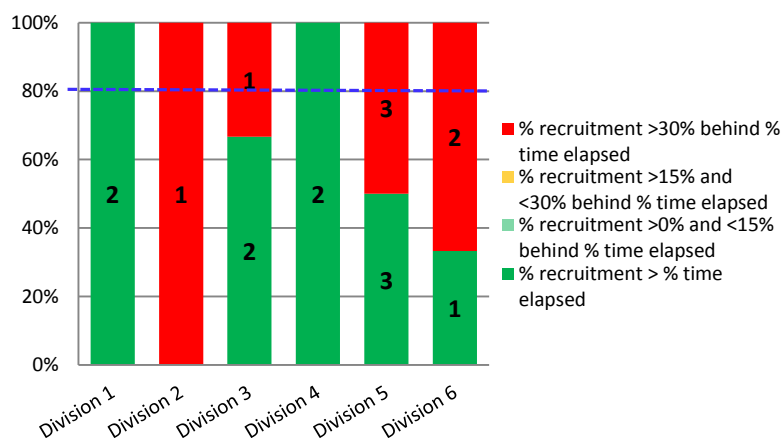
Performance Review July 2015

HLO 1 – Increase the number of participants recruited into NIHR CRN portfolio studies (local target 40,000)

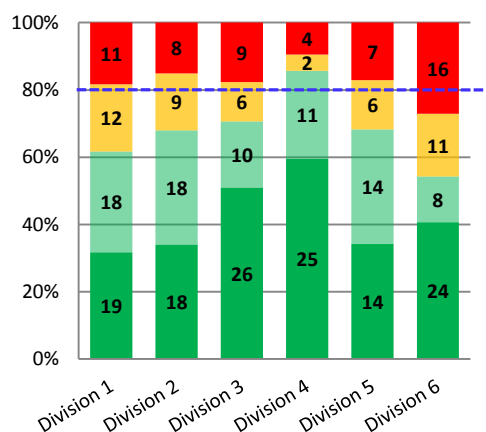


HLO 2 – Increase the proportion of studies in the NIHR CRN portfolio delivering to recruitment target and time (RTT) (national and local target 80% for HLO2a commercial and HLO2b non-commercial)

HLO 2a No commercial study data to report to date
HLO 2b Closed Non-commercial studies



HLO 2b Open Non-commercial studies



Awaiting CPMS to enable reporting on HLO 2

Please note that this data is generated at a national level and cannot be produced for the local LCRNs until new national systems (CPMS) have been implemented. This is now scheduled for Q4 2015-16. The metrics are also likely to be revised once the HRA changes have been implemented. The metric above reflects RTT for studies where CRN: TVSM is participating, however the RAG-rating is influenced by all participating sites and therefore may not be a true reflection of local performance.

HLO 3 – Increase the number of commercial contract studies delivered through the NIHR CRN

HLO 3a Number of new commercial studies (national target 600)

Number of commercial studies that consented patients in 2014/15 = 114

Number of commercial studies consenting patients in 2015/16 YTD = 53

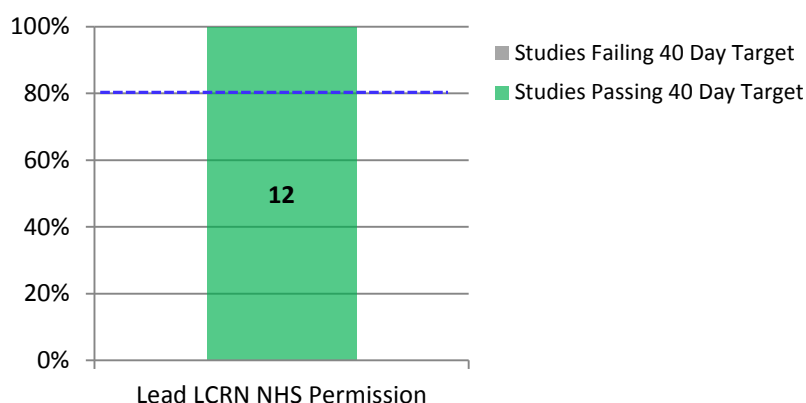
New commercial studies opened in 15/16 and consenting patients = 6

New commercial studies receiving local NHS permission in 15/16 = 30

HLO 3b New commercial studies entering NIHR CRN portfolio as a percentage of the total commercial MHRA CTA approvals for Phase II-IV studies (national target 75%)

Data reviewed nationally for HLO 3b

HLO 4 – Reduce the time for eligible studies to achieve NHS Permission through CSP (national and local target 80% within 40 calendar days)



HLO 5 – Reduce the time taken to recruit first participant into NIHR portfolio studies

HLO 5a Proportion of commercial studies recruiting first participant within 30 days of NHS Permission (national and local target 80%)

HLO 5b Proportion of non-commercial studies recruiting first participant within 30 days of NHS Permission (national and local target 80%)

Awaiting CPMS and LPMS to enable reporting on HLO 5

Please note that this data cannot currently be accurately produced at LCRN level until new national systems (CPMS) and local systems (LPMS) have been implemented. These are both currently being rolled out with CPMS now scheduled for Q4 2015-16. The metrics are also likely to be revised once the HRA changes have been implemented

HLO 6 – Increase NHS participation in NIHR CRN portfolio studies

HLO 6a Proportion of NHS Trusts recruiting into portfolio studies (national and local target 99%)

Current CRN: TVSM Trusts recruiting into NIHR CRN portfolio studies = 100%

HLO 6b Proportion of NHS Trusts recruiting into commercial portfolio studies (national and local target 70%)

Current CRN: TVSM Trusts recruiting into commercial NIHR CRN portfolio studies = 50%

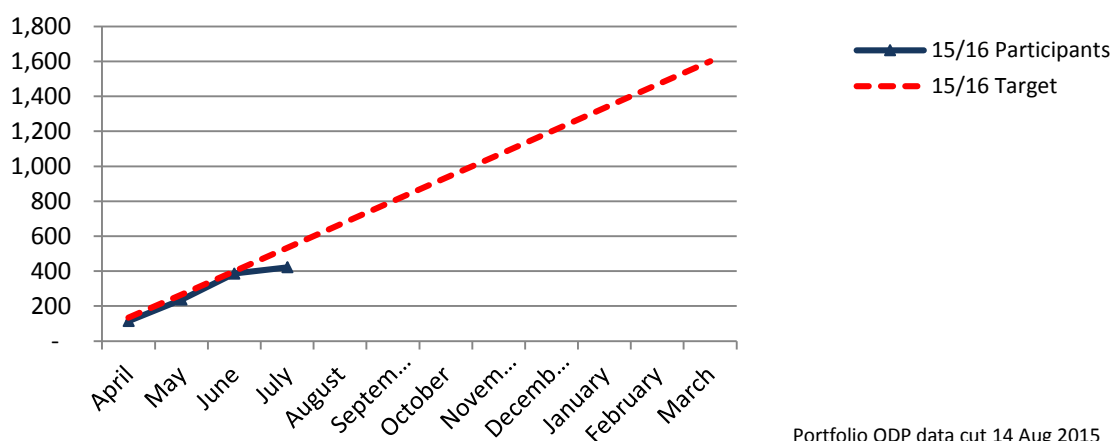
(July data - we fully expect other Trusts to start reporting commercial recruitment in-year)

HLO 6c Proportion of General Medical Practices recruiting into portfolio studies (national and local target 25%)

Current CRN: TVSM General Medical Practices recruiting into portfolio studies = 16%

(July data - we expect an in-year increase due to open studies and participation in the RSI scheme)

HLO 7 – Increase the number of participants recruited into DeNDRoN studies on the NIHR CRN portfolio (local target 1600)



Portfolio ODP data cut 14 Aug 2015