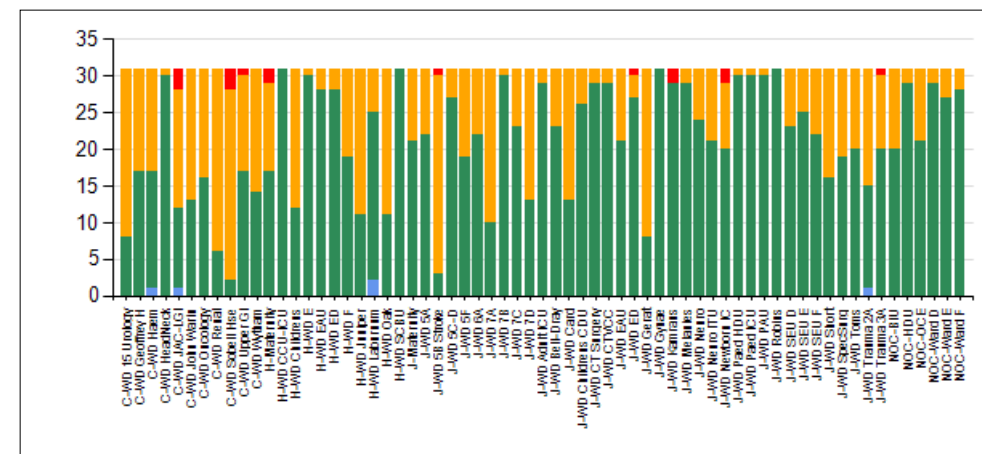


Appendix 1F

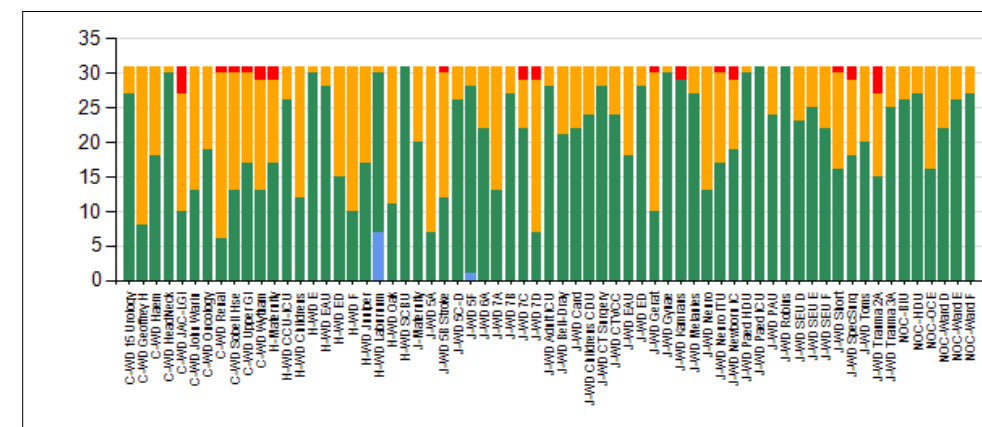
	Trust		
	May 15	June 15	July 2015
Total Funded WTE	2953.1	2966.20	2956.24
Vacancy %	11.3%	11.4%	9.7%
Sickness %	4.21%	4.4%	4.4%
Maternity/Adoption Leave %	3.3%	3.5%	3.3%
Agreed Staffing Levels %	73%	74%	73%
Total number of Medication Nursing Administration Errors or Concerns.	70	82	76
Total numbers of Hospital Acquired Pressure Ulcers	108	99	99
Total Number of Avoidable Grade 3-4 Hospital Acquired Pressure Ulcers	4	2	3
Total Numbers of Falls	190	193	231
Falls with harm	2	3	4

July 2015 Safe Staffing by Inpatient ward: Trust

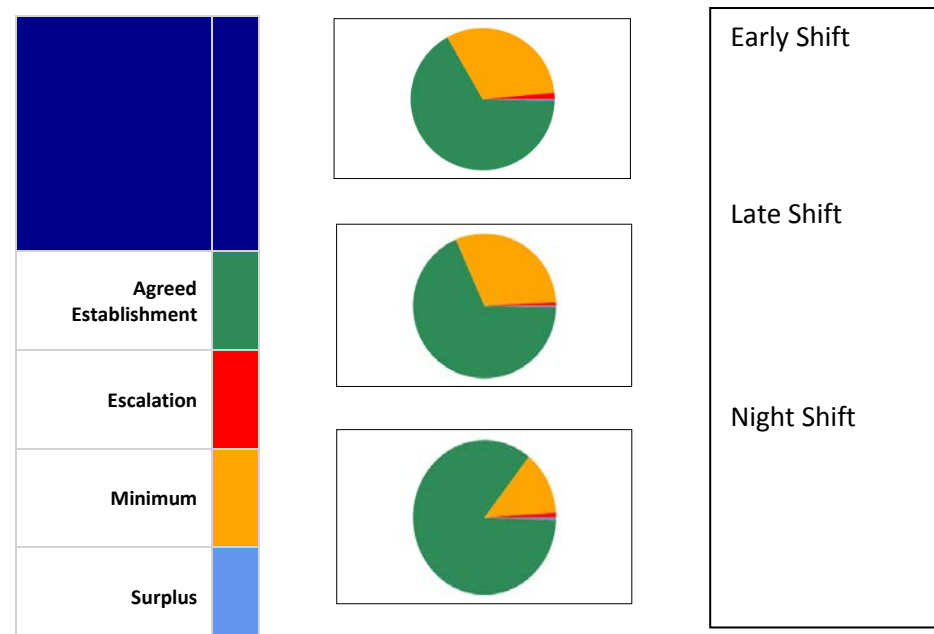
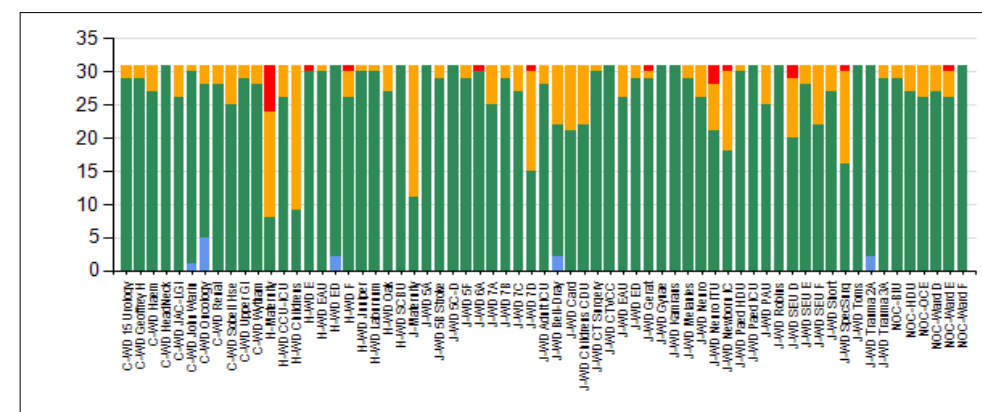
Early Shift



Late Shift



Night Shift



Narrative These diagrams demonstrate the shift by shift staffing across the Trust ward by ward as required by the National Quality Board guidance. There has been a steadily growing increase in the 'agreed' staffing levels and this is due to the EU recruitment drive which is ongoing. **NB: figures relating selected inpatient areas against specific indicators that are being monitored as nursing sensitive. The figures presented are accurate as of the date the information was retrieved from Datix (on 20th of the month). Any changes to the record after these dates as a result of ongoing review or investigation may not be reflected in figures retrieved after the Safe Staffing cut-off or elsewhere (i.e. Divisional Quality reports). Please note the data represents the total count of incidents observed that meet the indicator criteria for the given period, similar indicators that are constructed/reported differently will not match the figures reported here. Full specification details are included with the Safe Staffing reports.**

