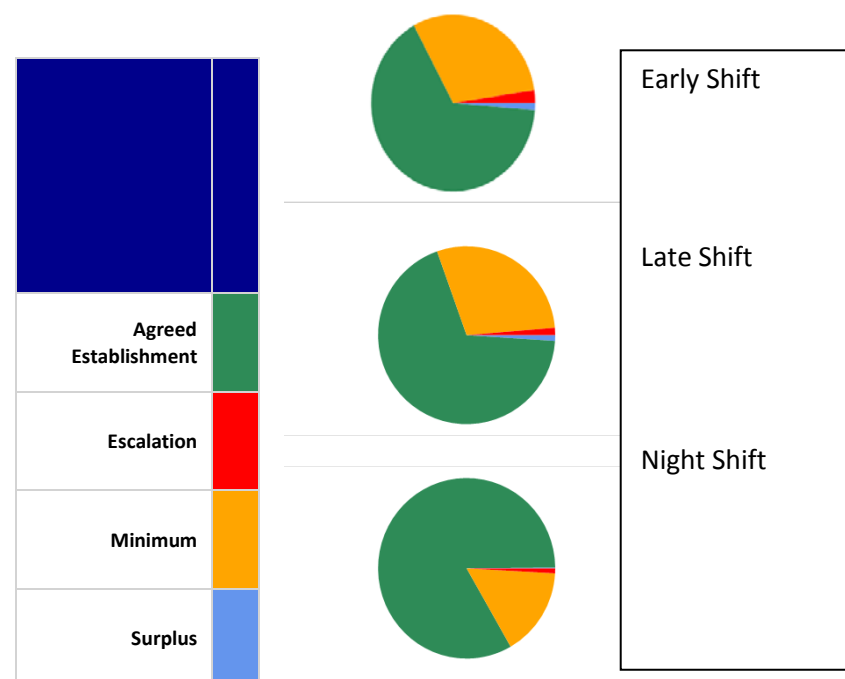


Appendix 4F

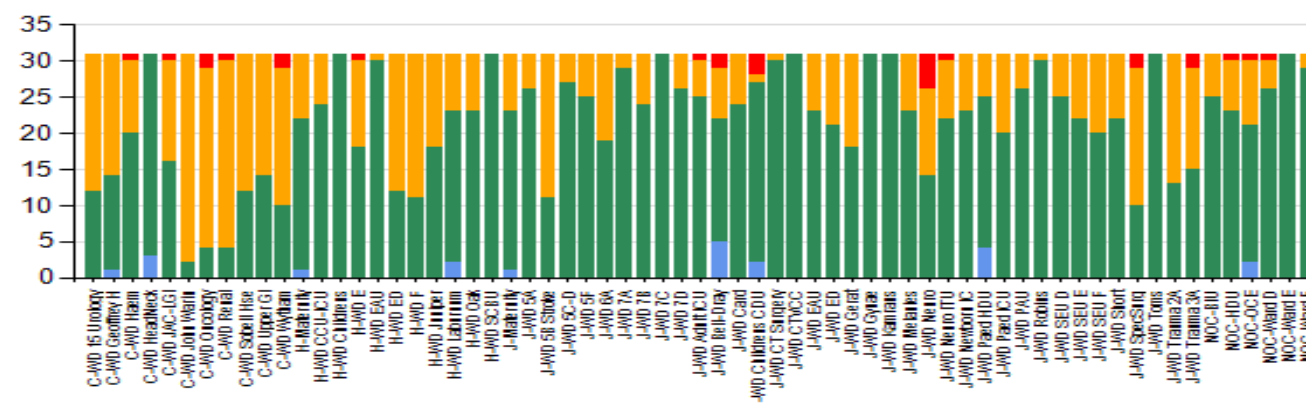
	Trust		
	March 15	April 15	May 15
Total Funded WTE	2946.55	2901.1	2953.1
Vacancy %	12%	11.6%	11.3%
Sickness %	4.2%	4.14%	4.21%
Maternity/Adoption Leave %	3.4%	3.3%	3.3%
Agreed Staffing Levels %	62.7%	71%	73%
Total number of Medication Nursing Administration Errors or Concerns.	62	60	70
Total numbers of Hospital Acquired Pressure Ulcers	94	74	108
Total Number of Avoidable Grade 3-4 Hospital Acquired Pressure Ulcers	1	2 Unconfirmed at the time of reporting	8 Unconfirmed at the time of reporting
Total Numbers of Falls	215	234	190
Falls with harm	3	4	2

May 2015 Safe Staffing by Shift: **Inpatient only: Trust.**

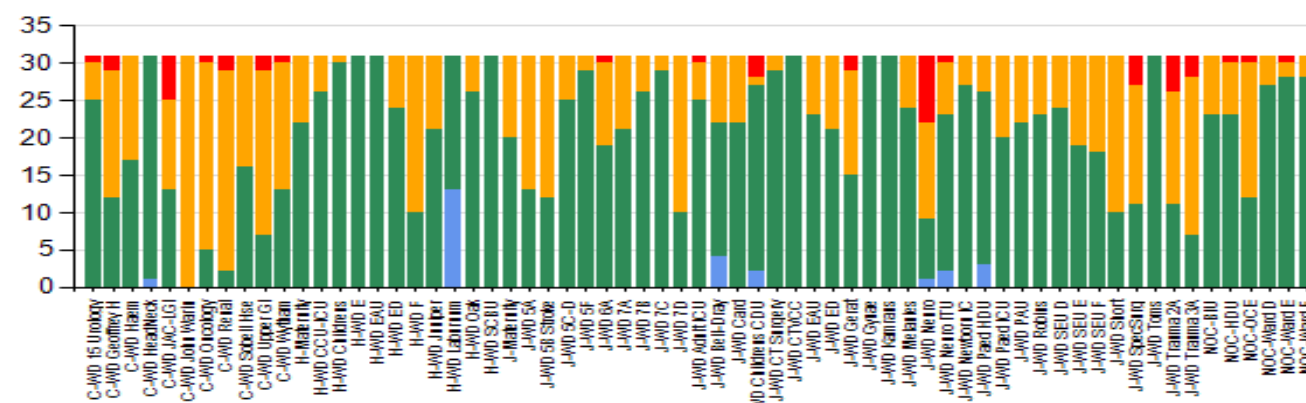


May 2015 Safe Staffing by **Inpatient** ward: Trust

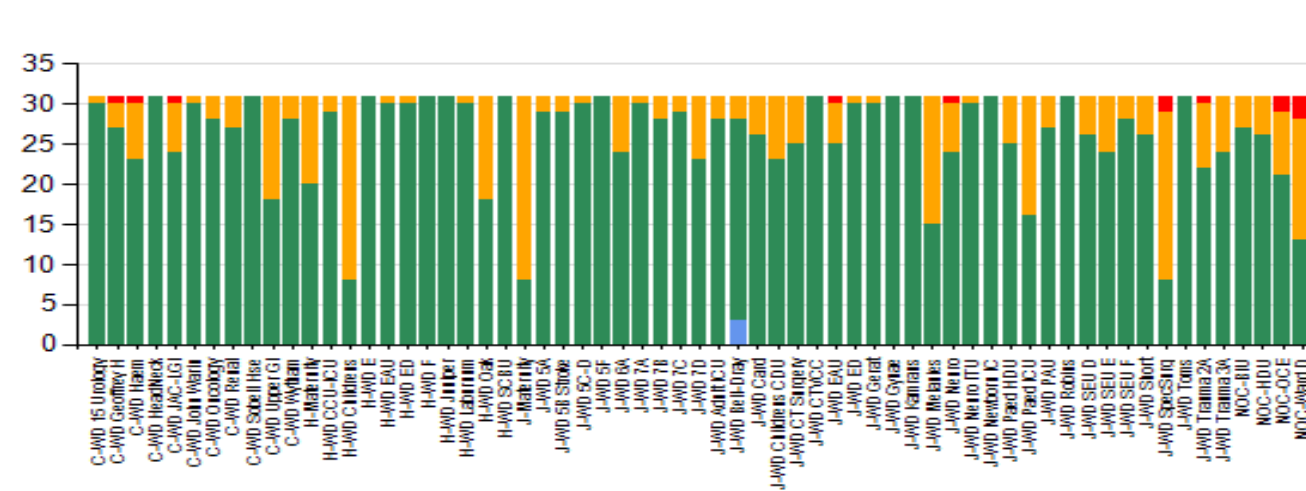
Early Shift



Late Shift



Night Shift



Narrative These diagrams demonstrate the shift by shift staffing across the Trust ward by ward as required by the National Quality Board guidance. There has been a steadily growing increase in the 'agreed' staffing levels and this is due to the EU recruitment drive which is ongoing. **NB: figures relating selected inpatient areas against specific indicators that are being monitored as nursing sensitive. The figures presented are accurate as of the date the information was retrieved from Datix (on 20th of the month). Any changes to the record after these dates as a result of ongoing review or investigation may not be reflected in figures retrieved after the Safe Staffing cut-off or elsewhere (i.e. Divisional Quality reports). Please note the data represents the total count of incidents observed that meet the indicator criteria for the given period, similar indicators that are constructed/reported differently will not match the figures reported here. Full specification details are included with the Safe Staffing reports.**

