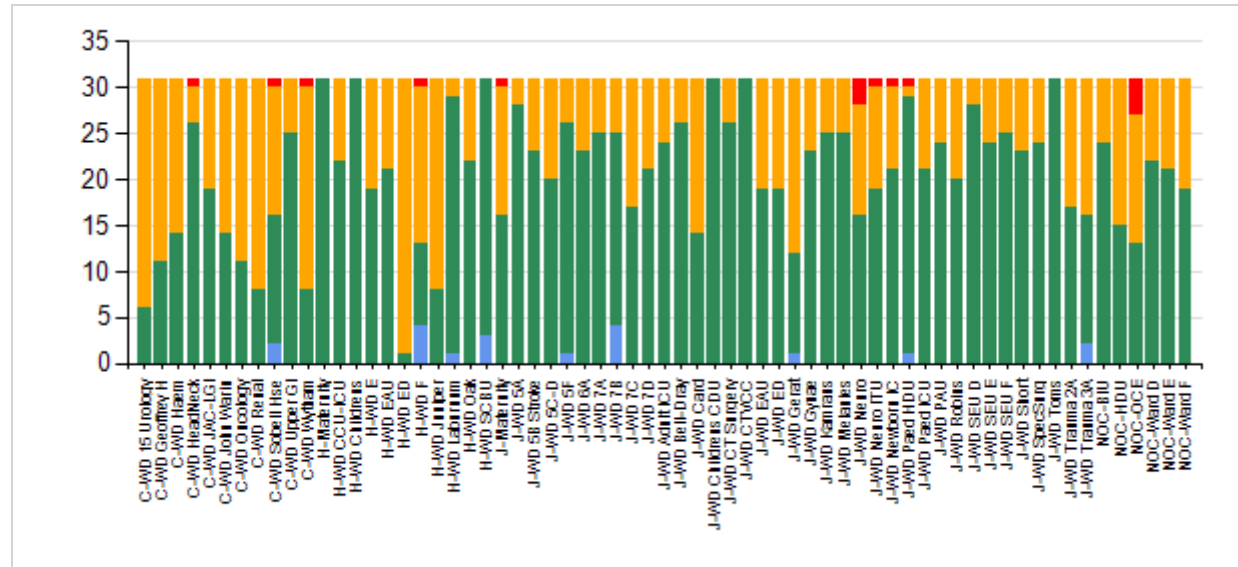


March 2014 Staffing Level Assessments By Inpatient Ward – Trust Wide

Early Shift:

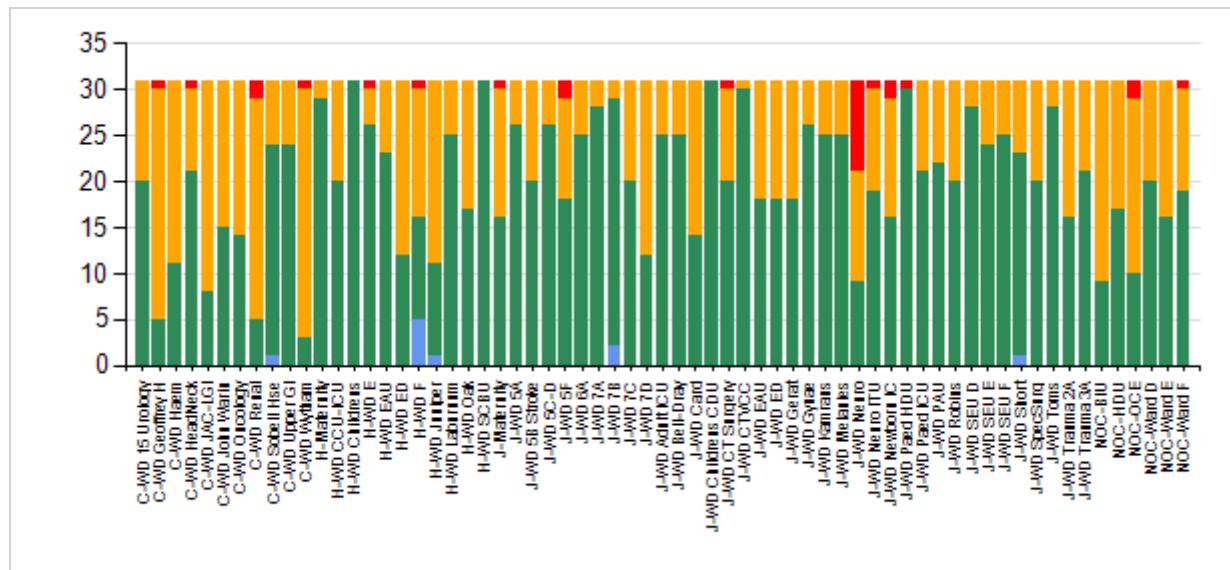
		Total
Agreed Establishment	Green	1318
Escalation Requiring Action	Red	15
Minimum Safe	Yellow	663
Surplus	Blue	19
Total Number of Shifts		2015



March 2014 Staffing Level Assessments By Inpatient Ward – Trust Wide

Late Shift:

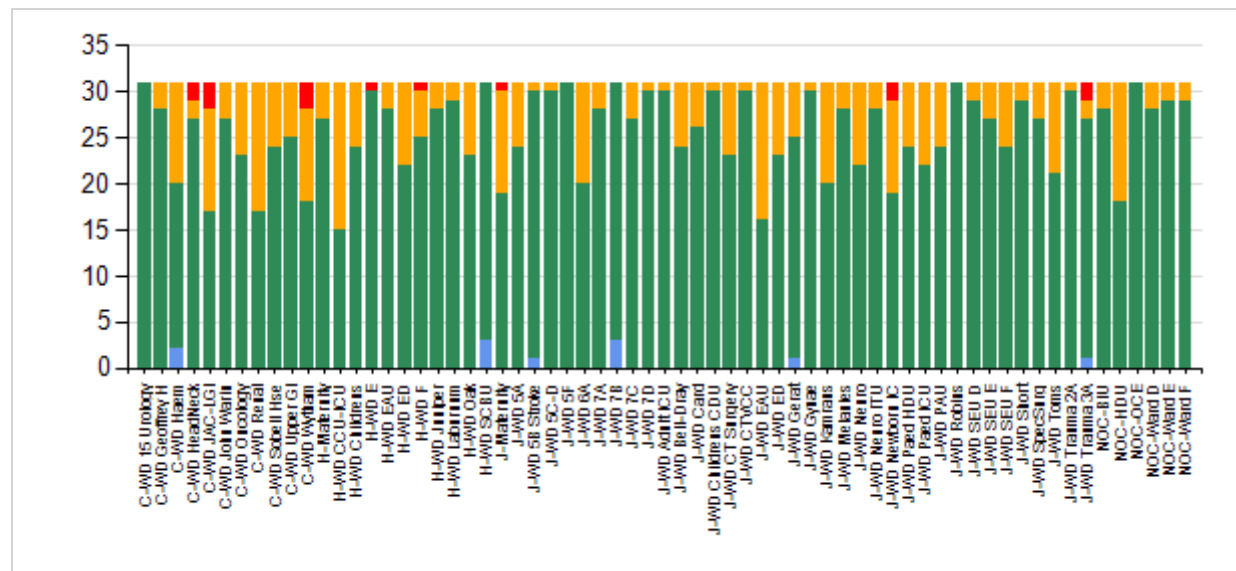
		Total
Agreed Establishment	Green	1289
Escalation Requiring Action	Red	28
Minimum Safe	Yellow	688
Surplus	Blue	10
Total number of Shifts		2015



March 2014 Staffing Level Assessments By Inpatient Ward – Trust Wide

Night Shift:

		Total
Agreed Establishment	Green	1650
Escalation Requiring Action	Red	15
Minimum Safe	Yellow	339
Surplus	Blue	11
Total Number of Shifts		2015



Notes:

- Total number of shifts remains consistent as each inpatient ward has a nominal day, late and evening shift per ward
- On occasion there are surplus shifts on the same ward as escalation requiring action shifts this can occur on different days across the month or when there are differences in skill set required.
- Narrative on wards (MRC, NOTTS, CWD and SOD) that have more that have several requiring action is provided in the attached report.