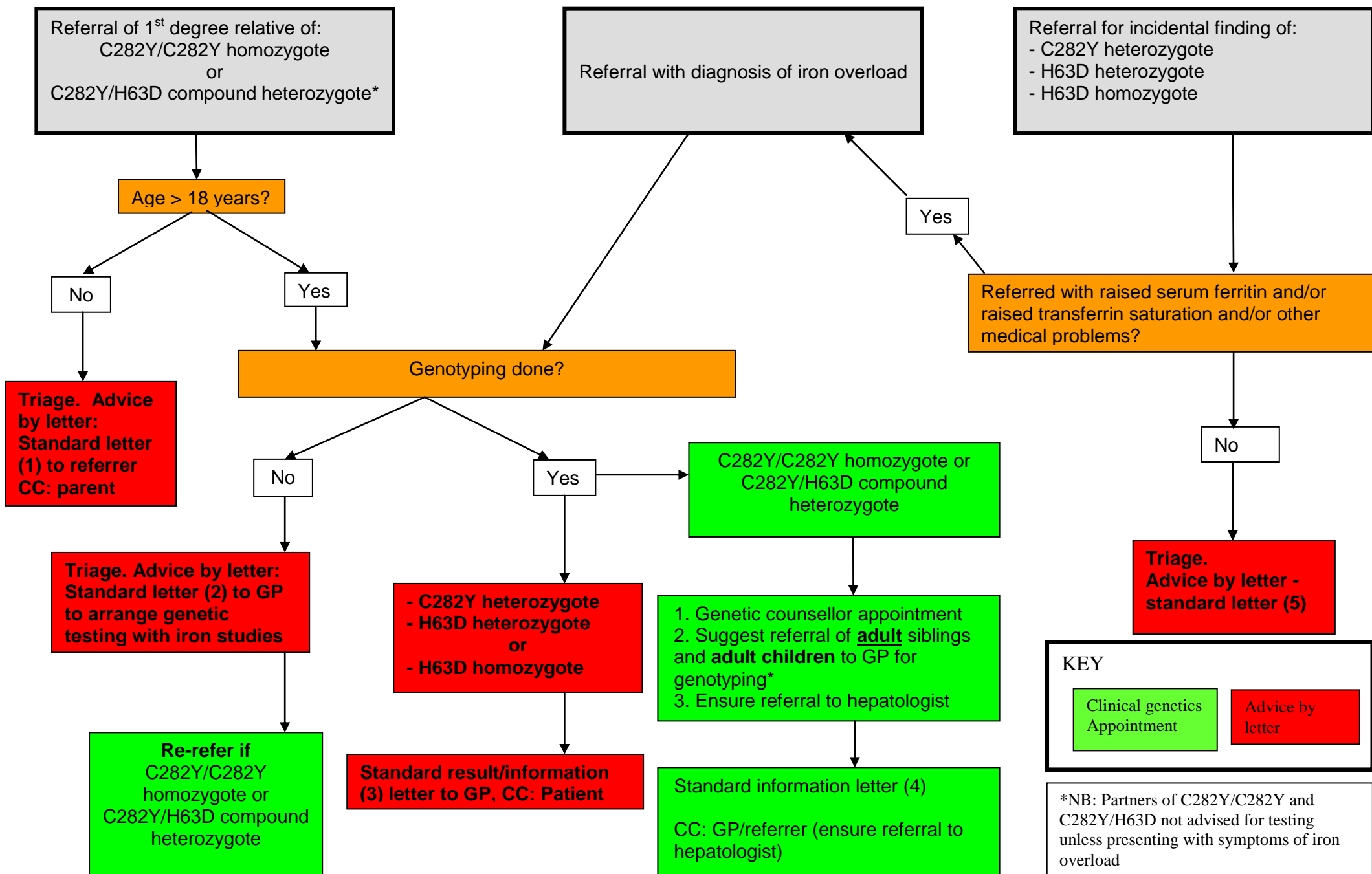


Hereditary Haemochromatosis Care Pathway

Aim: Cascade test so that C282Y homozygotes and C282Y/H63D heterozygotes are identified



KEY

| | |
|-------------------------------|------------------|
| Clinical genetics Appointment | Advice by letter |
|-------------------------------|------------------|

*NB: Partners of C282Y/C282Y and C282Y/H63D not advised for testing unless presenting with symptoms of iron overload